

Installing PentaLogix Network Licenses

(Using Reprise Server)

Contents

Overview	1
Requirements	2
How to Install the License Server?	2
Floating License Activation on the Server	4
Install the PentaLogix Product Software on the Client Machine	10
Policies	12

Overview

Any Windows based computer can be used as the License Server. It does not have to run a Windows Server type operating system. Windows 7, for instance, will do. In fact, the server computer could be the same computer as one of the client machines.

However, consideration should be taken when choosing which computer is used (such as network accessibility). The server computer should also be a system that won't be turned off or reset frequently when other users on the network are using the PentaLogix applications. If the server becomes unavailable while licenses are checked out, the client software using them will shut down with possible loss of data.

To install you must perform the following basic steps:

1. Install the **LSM - License Server Manager** application (see below).
2. Activate your license or Download your floating license file.
3. Install the PentaLogix product software on the client computers and install client licenses there.
4. Port **5053** and **5054** must not be blocked by the firewall.

Steps 1 and 2 are to be done on the server computer, step 3 on the client computers. Note: Network Licenses are also called **floating** licenses, as opposed to **node-locked** (or **standalone** licenses).

Requirements

1. Windows 7 or later. (32 or 64 bits)
2. .NET Framework 4.0 (already included in installer)
3. Administrative privileges.
4. Port 5053 and 5054 open on server

How to Install the License Server?

1. Download PentaLogix License Server Service Manager application from ftp://ftp.pentalogix.com/Updates/LicenseManager/Reprise/PentaLogixLicenseServer_Setup.zip
2. Unzip the downloaded file and run **PentaLogixLicenseServer_Setup.exe**. This is the installer.
3. After the installation finishes, execute the **LSM - Pentalogix License Server Manager** application from the shortcut located on the desktop. You can also find it in the folder where product was installed as **LSM.exe**.
4. Install the service. See Figure 1. This will install a Windows service and only needs to be done once. The service will start automatically when you reboot the computer in the future.

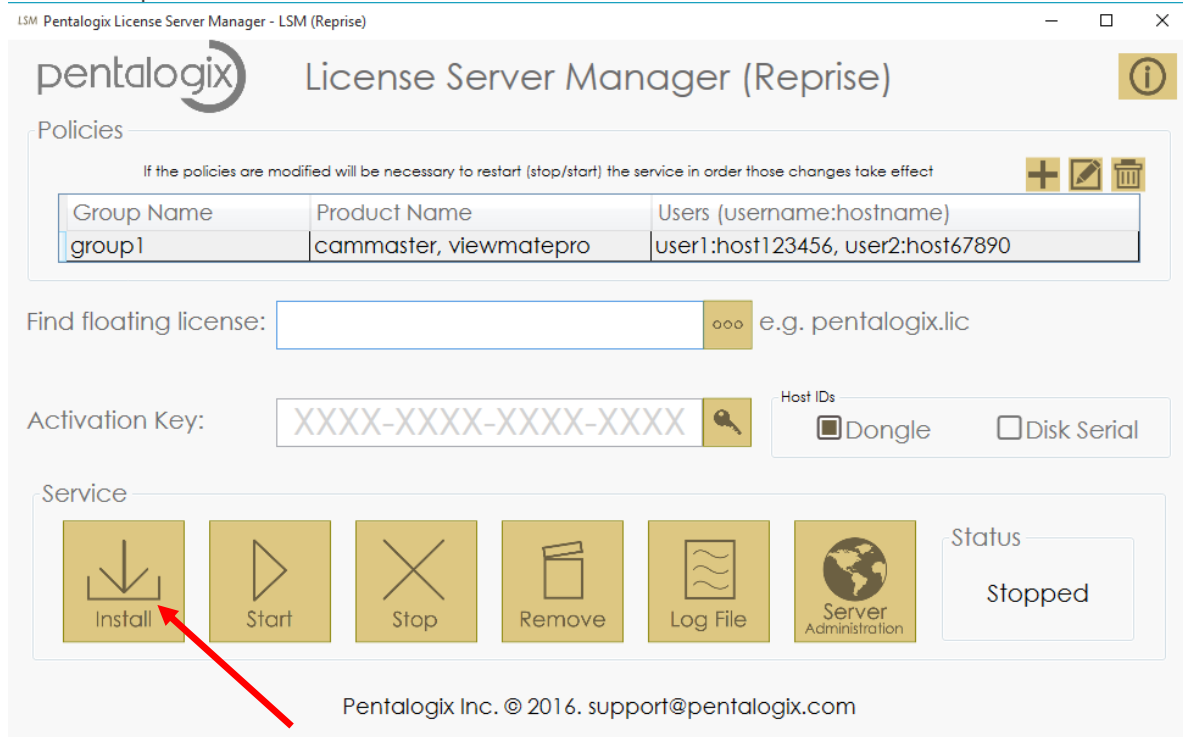


Figure 1. Installing service

5. If you already have a floating license file, you could find the license file and upload it. If not, please, see **Floating License Activation** section to know another available option. See Figure 2.

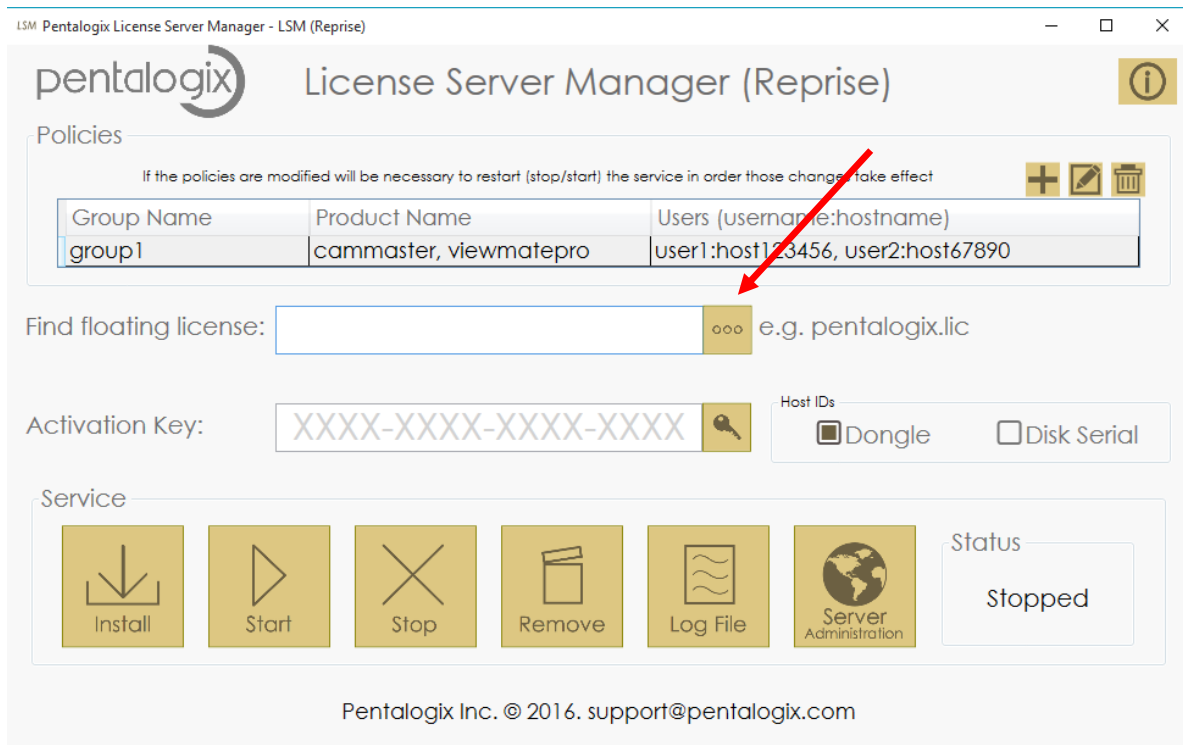


Figure 2. Finding a license file.

6. **Start** the service. See Figure 3.

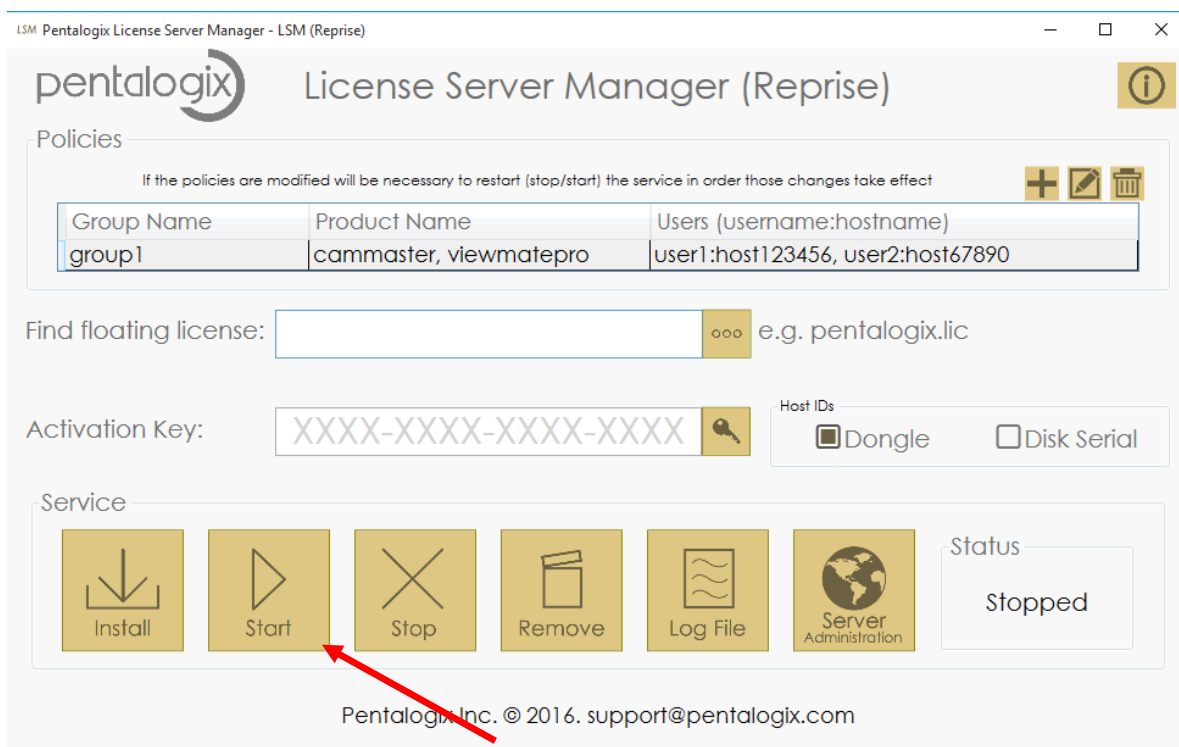


Figure 3. Starting service

Floating License Activation on the Server

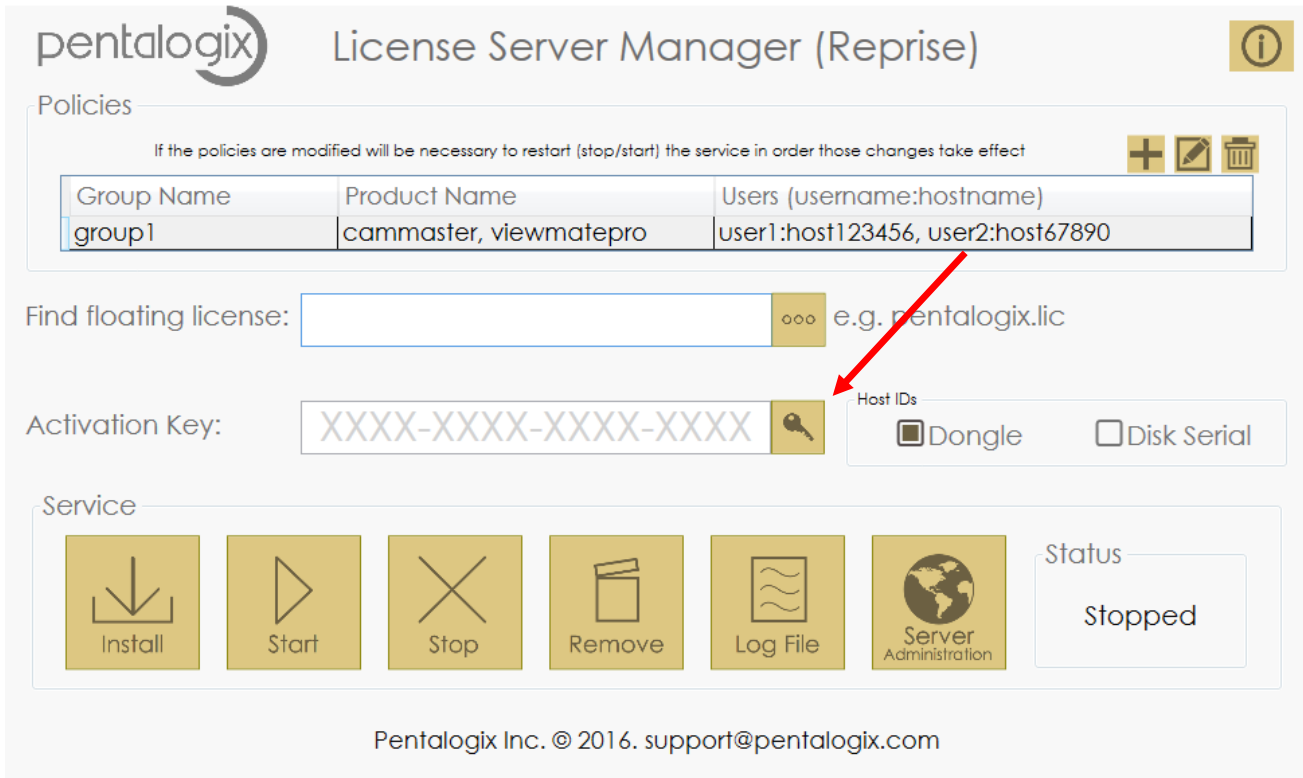
There are three options to activate your floating license:

1. Using the above License Server application.
2. Using the activation website located at <http://rlm.pentalogix.com/activation.php>
3. Using Reprise License Server Administration website (you can get to it by pressing the "Server Administration" button in the dialog shown above).

Note: The last option it is a bit more complicated to do. We highly recommend using either of the first two options.

Note: The three options above assume you already have an activation key. If not, contact sales@pentalogix.com or go to this webpage: <http://licensing.pentalogix.com/ActivationKeys/>

1. Using License Server application.
 - a. Enter your **activation key** provided when you purchased the software product. The activation key should have the format **xxxx-xxxx-xxxx-xxxx**, where each **x** is a digit.
 - b. Check what **host ID** want to use with your license to be locked. If you have a dongle, you may use **Dongle** option, otherwise you should use **Disk Serial**.
Note: If you are using Dongle option, make sure you have it connected before to continue to the next step.
 - c. Click in the **Key button** to create your license. See Figure 4.



Policies

If the policies are modified will be necessary to restart (stop/start) the service in order those changes take effect

Group Name	Product Name	Users (username:hostname)
group1	cammaster, viewmatepro	user1:host123456, user2:host67890

Find floating license: e.g. pentalogix.lic

Activation Key: XXXX-XXXX-XXXX-XXXX

Host IDs
☒ Dongle ☐ Disk Serial

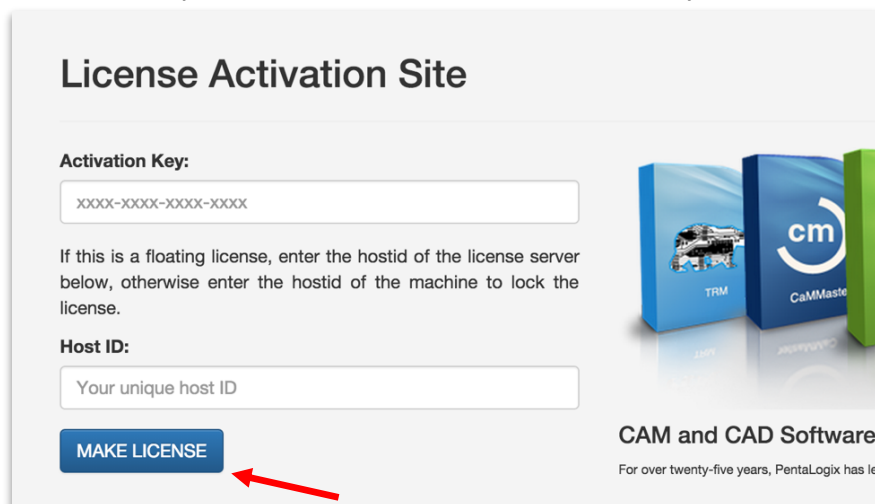
Service

Status: Stopped

Pentalogix Inc. © 2016. support@pentalogix.com

Figure 4. Activating a License with an activation key.

2. Using <http://rlm.pentalogix.com/activation.php> site. You will need:
 - a. **The Activation Key**. - It should be the key which was provided to you when you purchased the software product.
 - b. **HostID**. - It is the host ID of the computer intended to be run as License Server on your network.
 - c. After entering the **activation key** and the **hostID**, click on **MAKE LICENSE**. See Figure 5. Copy, paste and save the license generated to a file named <some_name>.lic. Upload this file using the License Server application (see **How to Install** section, **step 5**)



License Activation Site

Activation Key:

XXXX-XXXX-XXXX-XXXX

If this is a floating license, enter the hostid of the license server below, otherwise enter the hostid of the machine to lock the license.

Host ID:

Your unique host ID

CAM and CAD Software

For over twenty-five years, PentaLogix has led

Figure 5. Making a license file at the website

3. Using Reprise License Server Administration website.

- a. Click on **Server Administration** button. See Figure 6. Will show you Reprise License Server Administration in your default browser. If it doesn't show you anything in the browser, then you have not the service running (see **How to Install step 4 and 6**).

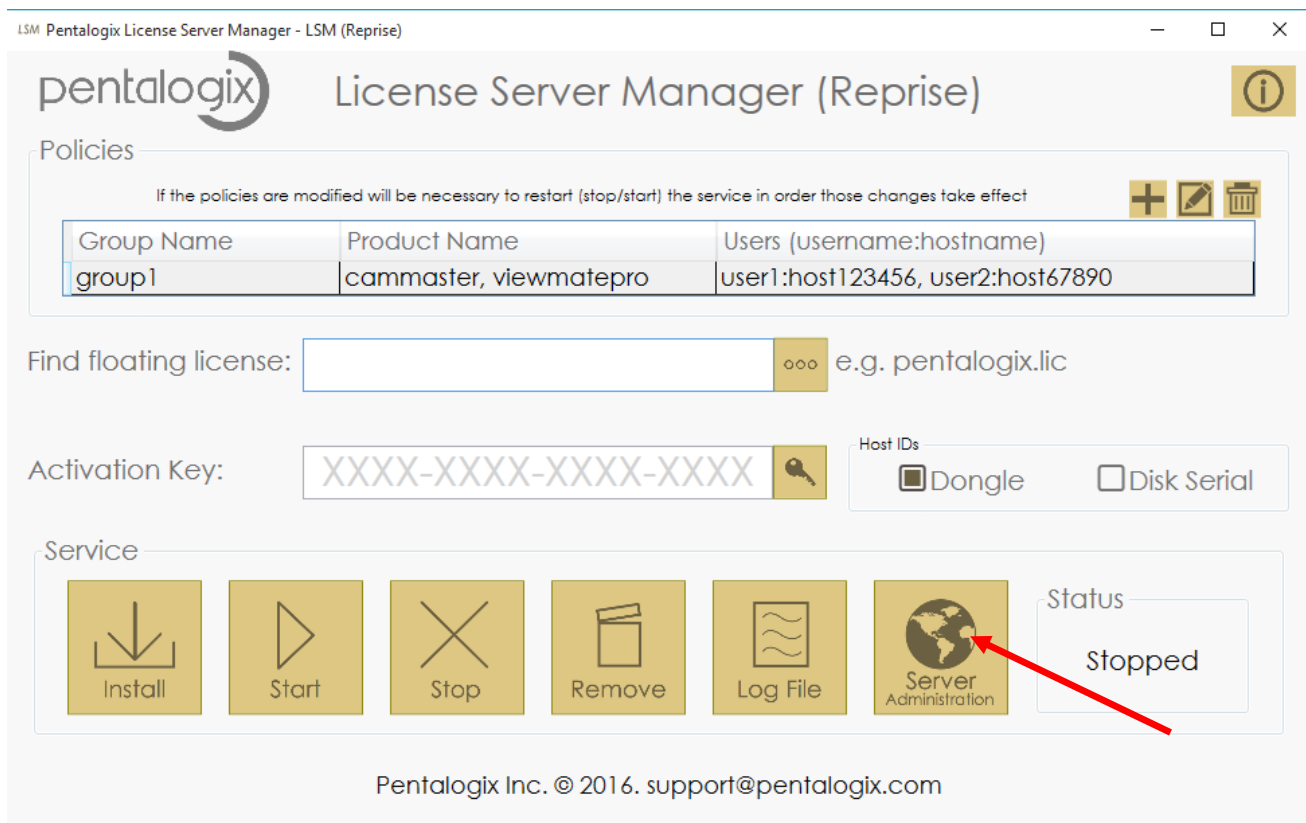


Figure 6. Launch the server administration website.

- b. Click in **Activate License** at the left panel. See Figure 7.

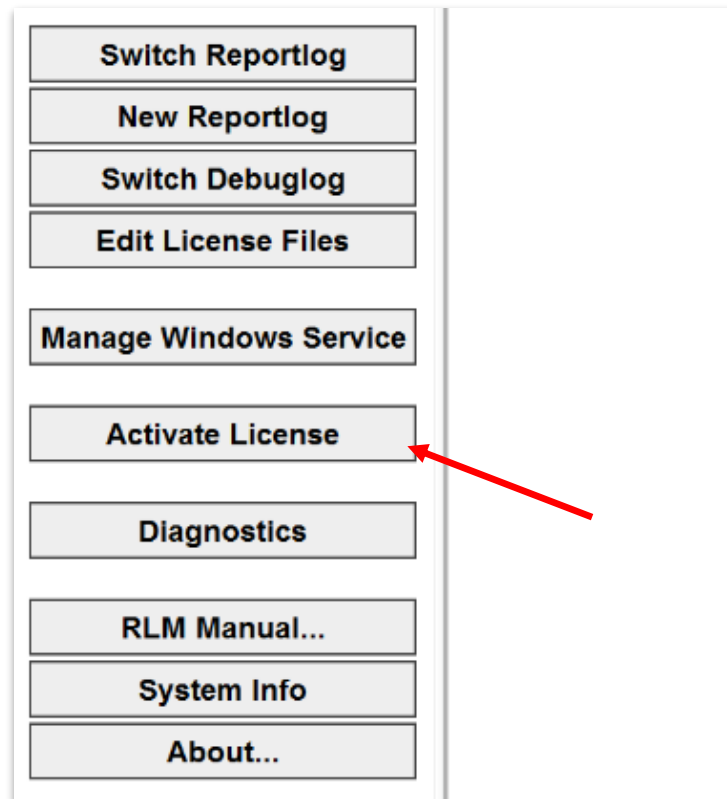


Figure 7. Activating the License with the RLM website

c. Then, **Begin License Activation**. See Figure 8.

[check with your vendor to see if this capability is available to you.](#)

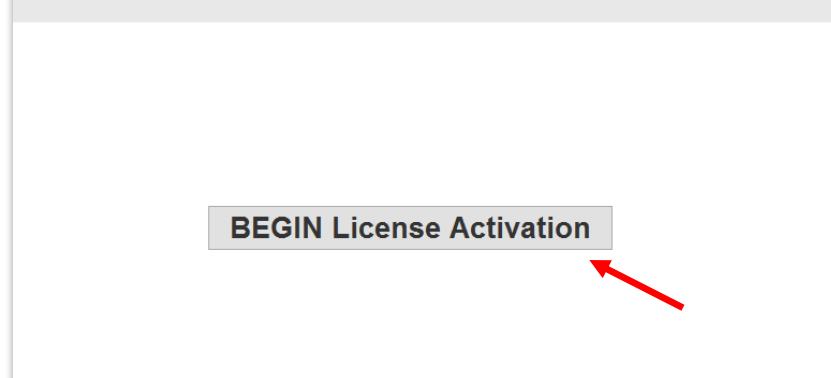


Figure 8. Beginning license activation.

d. Enter the ISV activation website with rlm.pentalogix.com, see Figure 9, then next.

License Activation (step 1 of 5) - select activation server

of different websites. First, enter the website below, then press "Next".

ISV activation website:

Next->

Figure 9. ISV activation website – IP address

- e. Enter the “**pentalogix**” as ISV name and your activation key provided to you, then next. See Figure 10.

ISV:

License activation key:

Next->

<-Back

Figure 10. ISV name and the activation key.

- f. Enter your host ID of the computer intended to be run as License Server on your network, then next. See Figure 11.

License Server or Node-lock hostid:

License count (for floating licenses):

Next->

<-Back

Figure 11. Host ID and License count

- g. Enter the name of License File to create or edit, then next. See Figure 12.

License File to create or edit:

Next->

<-Back

Figure 12. Entering the license name.

- h. It will show you a preview of the information that you entered in steps above. If all is right you could proceed to **REQUEST LICENSE**. See Figure 13.

Activation Request Data:

Activation Server	rlm.pentalogix.com
ISV	pentalogix
Activation Key	XXXX-XXXX-XXXX-XXXX
Count	1
Hostid	XXXXXXXXXXXXXXXX
License File	.\\activate1.lic

REQUEST LICENSE

<-Back

Figure 13. Activation request data summary.

- i. Click on **reread/restart servers**. See Figure 14.

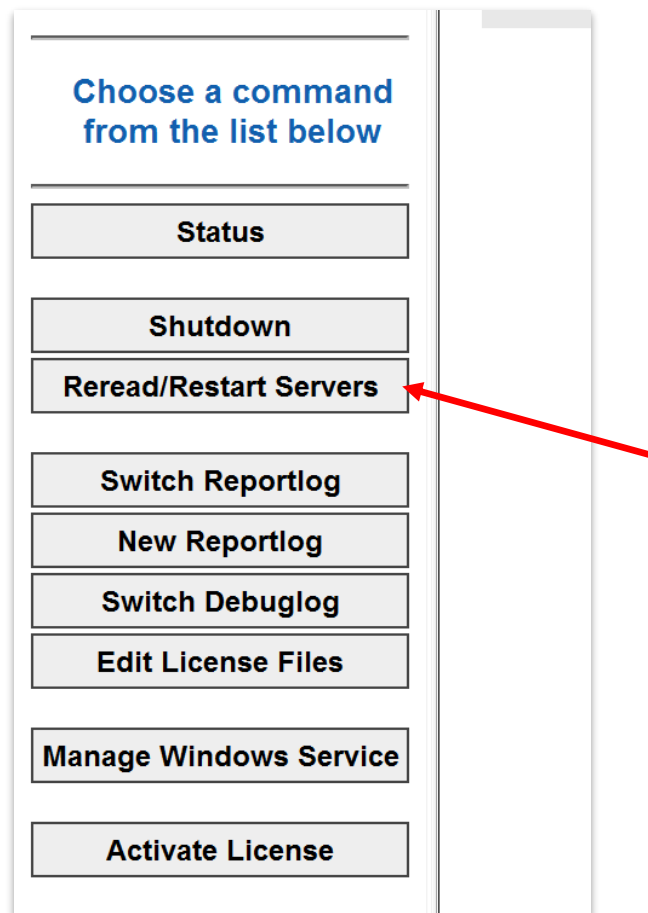


Figure 14. Reread and Restart the license servers

Install the PentaLogix Product Software on the Client Machine

In order to run your PentaLogix programs the applications must be installed on your client computers. You may install the applications on as many computers in your network as you wish. The License Server will distribute licenses to the clients when the programs are started. The number of clients who can run the software at the same time depends on the number of licensed users recorded in the license on the server. So, if you have a license for 5 users, 5 different client computers can check out a license at the same time. If the 6th tries, it will fail.

On the client computers you need to install the client software only, such as CAMMaster or ViewMate Pro, and you do **not** need to have access to the license file. When the program is used for the first time it will bring up the licensing dialog. This dialog can appear later as well if the licensing fails (server is down or inaccessible etc.).

The application is called **ActivateLicense.exe** and is installed in the same folder as the CAM product. You can activate it by itself, but double-clicking on it, but it is most

often started automatically, as described above.

This dialog has a lot of information because it can be used to generate any kind of license (node locked, demo or floating). For floating, you are only interested in the bottom section:

Activate License for ViewMate Pro V11.10.7

Computer locked or Dongle locked

If you have an activation key, enter it here and press **Activate Now**.
The Activation Key is of the form
XXXX-XXXX-XXXX-XXXX
(Digits only)

If you don't have an activation key press the button below.
You will need to know the Serial and Password for your product

If activation fails, push the button below and enter the needed info into the Activation Portal.
If you cannot reach the Portal, contact Pentalogix Sales

Activate Now **Get Activation Key** **Activation Portal**

Demo / Eval

Request a 30 day evaluation (if you have not done so already)

Email: **30 Day Eval**

Floating (Network) License

IP of License Server:

Generate license

License Server Admin...

The server communicates over ports 5053 and 5054. Please make sure these are not blocked by a firewall on the server or this client

pentalogix

If you need help, contact sales@pentalogix.com

All you need to know is the **IP address** of the computer where the license server was installed (see the previous sections). If you don't know it, ask your system administrator.

Enter this IP in the box shown above and then press "Generate license".

Note that on some local networks, the floating licenses will work even without installing licenses on the client side, but it is always safer to install them.

Also note that communication to the server is done over port **5053**. Make sure this port is not blocked by a firewall on the server or client, because if it is, licensing will not work on the client.

Policies

The policies are managed using groups. A group can contain one or many license products. Each user added to the group will be allowed to use all products belonging to this group. It can be created any number of groups as you wish.

The product name is the name of the license that you bought. i.e viewmatedeluxe, cammaster, viewmatepro.

Each user is identified by the username and the hostname of the PC.

Add a Group

1. To add a group, click on add button.
2. Enter the group name
3. To add a product name, username and hostname, double click in the table cell that you want to write.
4. To save the group, just close the dialog.

Note: If some field is empty, the group won't be saved.

LSM Pentalogix License Server Manager - LSM (Reprise)

pentalogix License Server Manager (Reprise)

Policies

If the policies are modified will be necessary to restart (stop/start) the service in order those changes take effect

Group Name	Product Name	Users (username:hostname)
group1	cammaster, viewmatepro	user1:host123456, user2:host67890

Find floating license: e.g. pentalogix.lic

Activation Key: XXXX-XXXX-XXXX-XXXX

Host IDs ☒ Dongle ☐ Disk Serial

Service

Install Start Stop Remove Log File Server Administration

Status Stopped

Pentalogix Inc. © 2016. support@pentalogix.com

Figure 15. Add a group

Edit a Group

To edit a group, you have to select a row – group to edit, and click on the edit button.

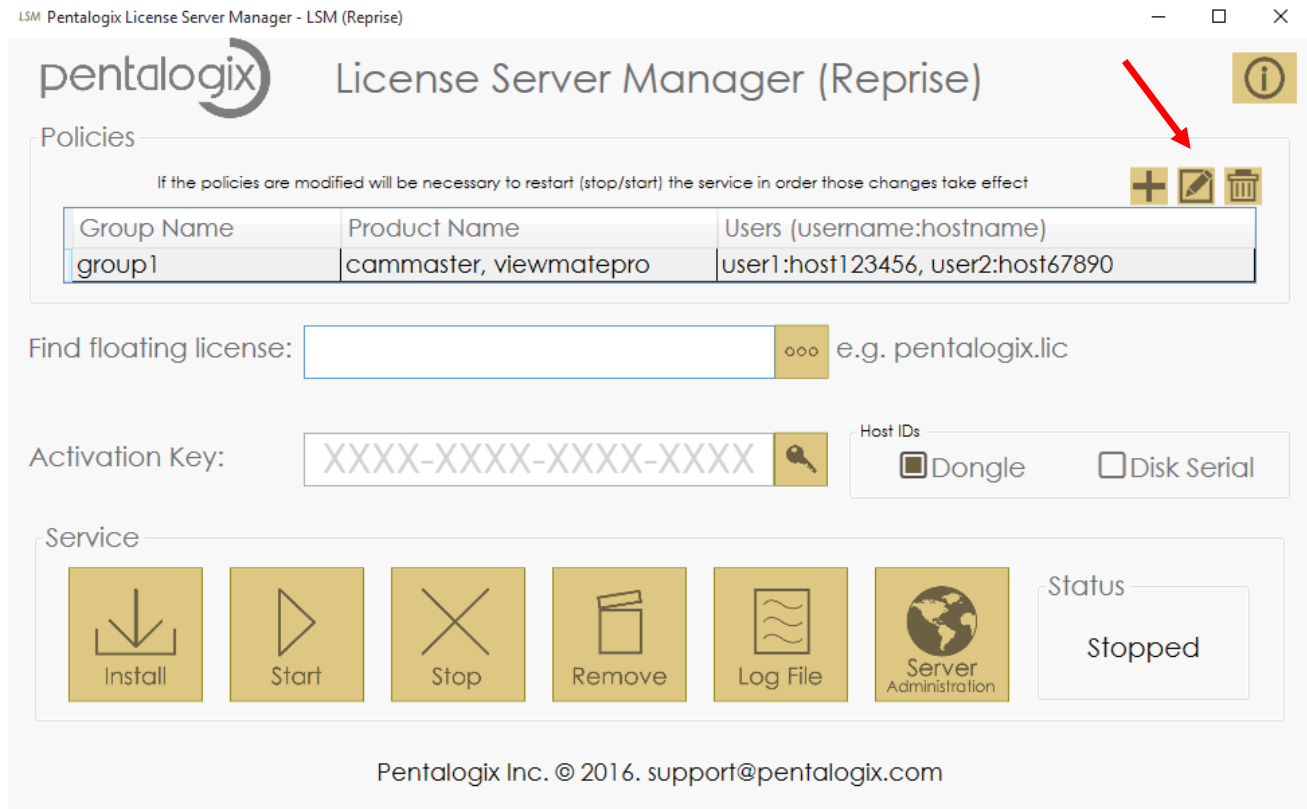


Figure 16. Edit a group

Remove a Group

To remove a group, you have to select a row-group to remove, and click on the remove button.

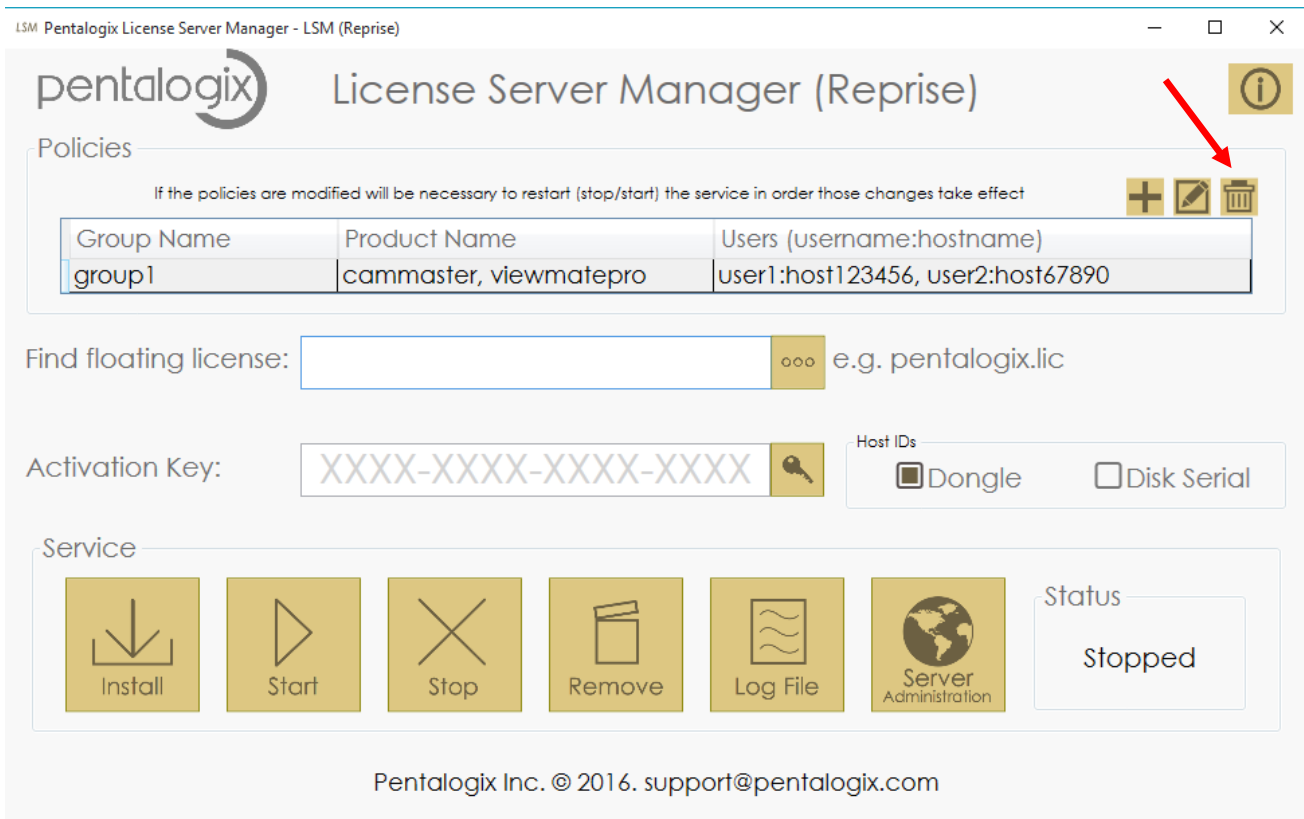


Figure 17. Remove a group

Copyright © Pentalogix, 2016. All rights reserved.

You may cite or refer to information published in this document, but you may not reproduce or distribute such information in whole or in part without the prior permission of PentaLogix.

Disclaimer: Reasonable efforts have been made to ensure the accuracy of the information presented. However, PentaLogix assumes no responsibility for the accuracy of the information. Product information is subject to change without notice. Pentalogix may make improvements and/or changes in the products and/or the programs described in these publications at any time without notice.

Trademark: ProbeMaster, FixMaster, CAMMaster, Verify, ViewMate and LAV501 are trademarks or registered trademarks of PentaLogix.